

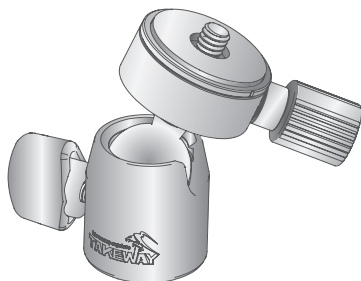
T-B03 MANUAL

Ballhead



All information described in this manual is based on the test standard of Takeway. Sorry for the inconvenience caused if there are any printing errors. The design and specifications of this product are subject to change without notice.

Copyright: All Rights Reserved



EHOMA INDUSTRIAL CORPORATION

TEL: +886-4-2406 5031

info@takeway.tw

www.takeway.tw/eng

Ballhead EN 2018/05

T-B03 MANUAL

Ballhead

Before using the product for the first time, please read through the user guide.

Please use this product correctly after fully understanding the content of the user guide.

Takeway® T-B03 Ballhead can be combining with Takeway® Clampod or any tripod with 1/4" or 3/8" screw.

Parts name:

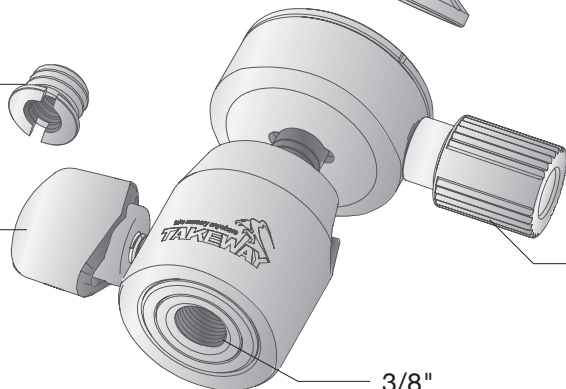
T-SA23
3/8" » 1/4"
Screw adapter

T-BK02
Ballhead knob

T-RC01
Quick
release
clip

T-RK01
Quick
release
knob

3/8"
Screw hole

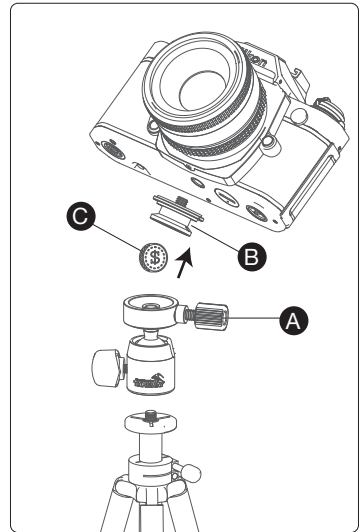


T-B03 MANUAL

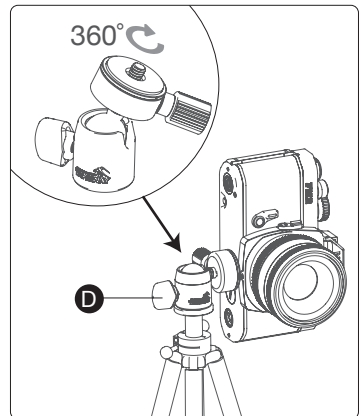
Ballhead



- 1 Release **A** Quick release knob, and remove **B** Quick release clip. Screw in Quick release clip on your digital (SLR) camera with a **C** coin or a flathead screwdriver. Please make sure that the quick release clip is screwed in tightly so that the camera does not loose from it.



- 2 Combining with a tripod and make sure it is firmly. Mount Quick release clip with the camera on the Mounting platform, and screw in Quick release knob. Before shooting, please use **D** Ballhead knob to rotate the camera freely in 360°. Adjust the camera to a proper position and you can start shooting.



Specifications:

Size: 31 x 31 x 55mm

Weight: 78g

Materials: Aerospace-grade aluminium alloy, Nylon(T-BK02),
High-class stainless steel (T-SA23)

Quick release screw: 1/4"

Load capacity: 3kg

Screw hole : 3/8"

Screw adapter: 3/8" » 1/4"