

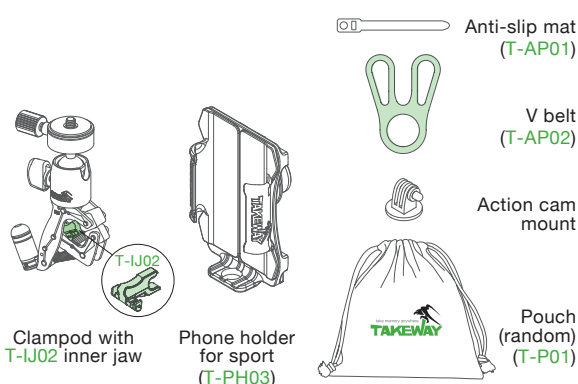
1 Our sincere gratitude

Our sincere gratitude
Takeway® R2 Ranger Clampod Professional edition is another revolutionary breakthrough after R1 Ranger. The ultra-lightweight R2 Ranger Clampod is built for the "outdoor enthusiasts" group. The R2 Ranger Clampod weighs only 135g and is portable and convenient to use for consumer electronics such as action cameras, smartphones and tablets. R2 Ranger Clampod can be easily dissembled without tools and has a maximum load capacity of 3kg(static). The R2 will not loosen even when it is used while moving around, and can be matched with different accessories. This provides users with versatility based on user requirements. Not only can it be clamped on to tubes, it can also be secured on flat surfaces and be placed in pockets. Even extreme sports will not affect its function, so enjoy every moment and explore new experiences with Takeway® R2 Ranger Clampod Professional edition!

2 Please test the relevant components and read responsibility statement before using this product

Before using this product on your consumer electronic products, please check Takeway® R2 Ranger clampod Profession edition and its accessories for damage or deformity. If there is any, please contact the salesperson to exchange your product to prevent damage of your consumer electronic products or personal injury caused by the flawed product. The company takes no responsibility and assumes no liability for the loss or inconvenience caused by user's own negligence.

3 Product components

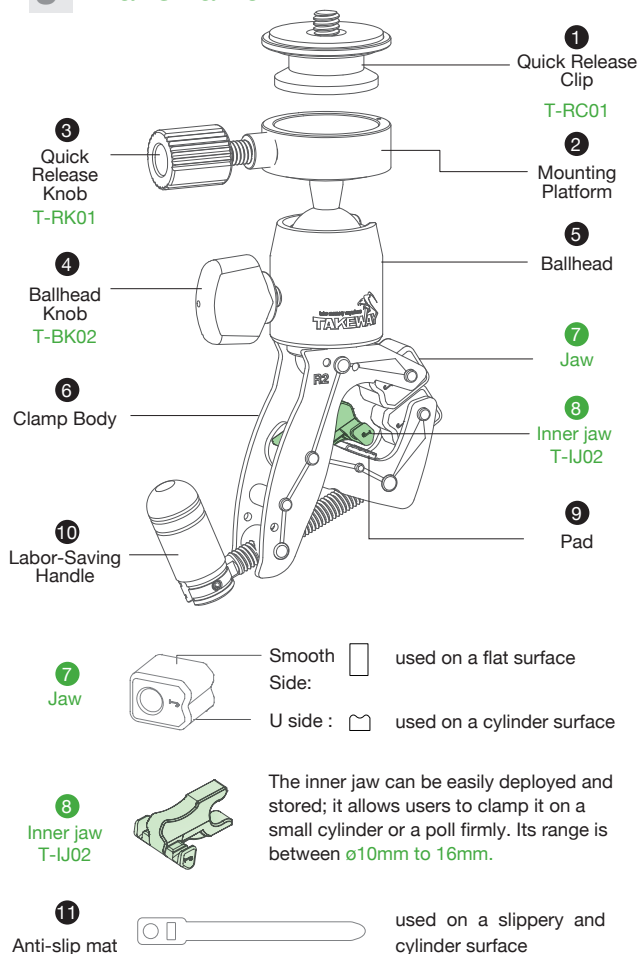


4 Operation notes

- 4-1: When using on a flat surface, use the grid side of the clampod for stability or use the smooth side of the clamp to protect the surface from damaging.
4-2: When clamping on a smooth cylindrical surface, place the anti-slip mat between the surface and the clampod to increase grip.
4-3: The body of the clamp is made of aluminum alloy, but do not place the product in a humid environment for a long time to avoid product being damaged.

- 4-4: Do not place the product near heat or open flame which will damage the plastic components.
4-5: If the product has not been used for a long time, please check the components and functions work normally, so that it does not fall when it is used on the electronic products.
4-6: After the product is assembled, please place it on a flat surface to check for its stability. When using this product for standing shooting, do not remove your hands from your electronic product when installing it on the clamp. Make sure that the clampod stands firmly on the surface before shooting, so that your electronic product will not be damaged caused by the fall of the clampod.
4-7: Please follow the installation instruction below when utilizing this product. First, clamp and secure the R2 Ranger Clampod, then use the attached quick release clip to mount your electronic device and prevent your device from falling and getting damaged.
4-8: When installing the quick release clip to electronic devices or accessories, please make sure that the quick release clip is screwed in tightly to prevent it from loosening and falling.
4-9: When using or storing the clampod, please prevent a sharp item from the jaw. It may damage the jaws.

5 Parts name



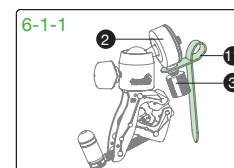
6 Assembly and operation

6-1: Anti-slip mat assembly, disassembly and storage

Assemble and place the ① anti-slip mat in between a smooth cylindrical surface and the R2 Ranger Clampod to increase stability of the clampod and to avoid sliding. The mat can also be stored between the Quick release knob and the mounting platform to prevent it from getting lost.

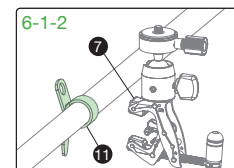
6-1-1: Storing the anti-slip mat

As the figure shows, store the ① anti-slip mat between the ③ quick release knob and the ② mounting platform.



6-1-2: Using the anti-slip mat

As the figure shows, wrap the ① anti-slip mat on the 6-1-2 cylinder to be gripped. Then use the ⑦ square jaw to clamp the anti-slip mat to increase grip.

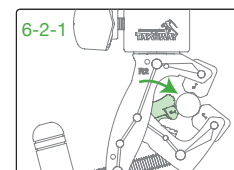


6-2: Use of the inner jaw

For better convenience and stability, use the inner jaw to secure the object when clamping the R2 Ranger Clampod on small tubes. The inner jaw is made of high-grade, high-strength reinforced plastic. The inner jaw comes installed in the clamp from the factory. Do not remove inner jaw unless necessary to prevent the jaw from being lost.

6-2-1: Use with inner jaw

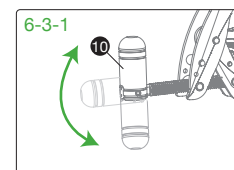
Move the securing position of the inner jaw downward to the center to attach to cylinders. After securing, shake gently to make sure it is tight to prevent items from coming loose and falling.



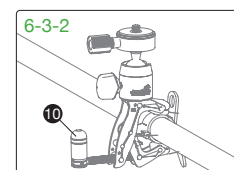
6-3: Instructions for clampod usage

To choose a proper usage for clamping, please refer to 6-2-1: Use with inner jaw... When clamping smooth cylindrical surface, please refer to 6-1-2: Using the anti-slip mat.

6-3-1: Clamp and secure the clampod on the object to be gripped. As shown in the figure, ⑩ the convenient handle fixing point can be bent for more flexible application in limited space. This also can be rapidly and conveniently done with less effort.

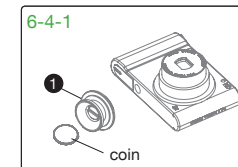


6-3-2: Clamp the R2 Ranger Clampod to a proper location and shake gently to make sure it is firmly secured to prevent items from loosening and falling.

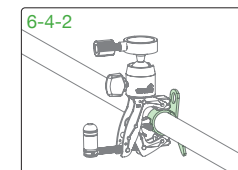


6-4: Mounting and using digital cameras

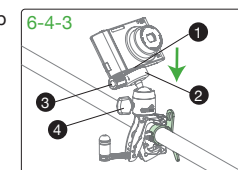
6-4-1: Release ① Quick release knob, and remove Quick release clip. Screw in. Quick release clip on your digital camera with a coin or a flathead screwdriver. Please make sure that the quick release clip is screwed in tightly so that the camera does not loose from it.



6-4-2: Clamp the R2 Ranger Clampod to a proper location and shake gently to make sure it is firmly secured to prevent items from loosening and falling.



6-4-3: Mount ① Quick release clip with the camera on ② Mounting platform, and screw in. ③ Quick release knob. When shooting, please use ④ ballhead knob to rotate the camera freely in 360°. Adjust the camera to a proper position and you can start shooting.

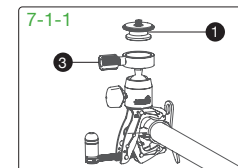


7 Mounting and operating action camera

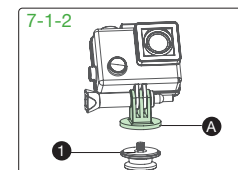
7-1: Mounting a action camera

The action cam mount referred to in the assembly instructions is a standard accessory for the R2. We also recommend purchasing additional T-RC03 action camera quick release clip for added convenience when using.

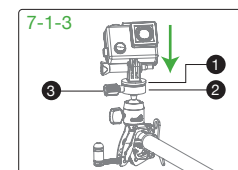
7-1-1: Clamp the R2 Ranger Clampod to a proper location. Please refer to 6-3 Instructions for clampod usage, release ③ quick release knob, and remove ① Quick release clip.



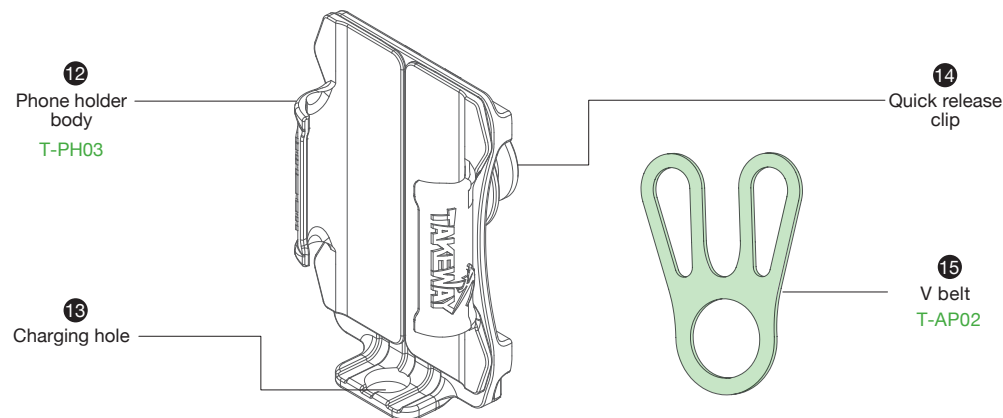
7-1-2: Fix ① action cam mount to ① Quick release clip with a coin, then mount it with action camera housing case. Make sure it is firmly secured to prevent action cam from loosening and falling.



7-1-3: Mount ① Quick release clip with the action cam on ② Mounting platform, and screw in ③ Quick release knob. Adjust the action cam to a proper position by ballhead then start shooting.

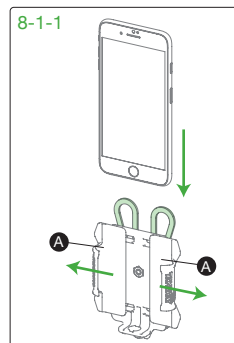


8 T-PH03 Phone holder for sport-parts name

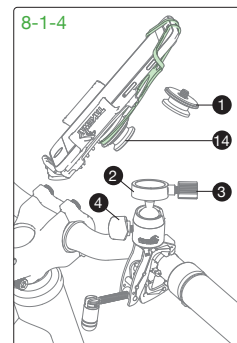


8-1: Mounting and operating

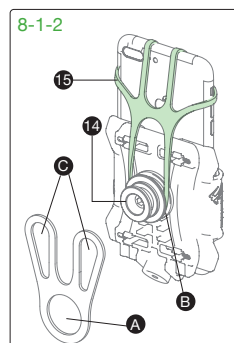
8-1-1: Push **A** the mounting plate slightly outward and insert phone by sliding the phone from the top to the bottom.



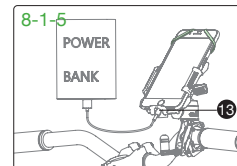
8-1-4: Release **3** Quick release knob, and remove **1** Quick release clip. Mount **14** Quick release clip with the Phone holder on **2** Mounting platform, and screw in **3** Quick release knob. When using, please use **4** Ballhead knob to rotate the phone a freely in 360°. Adjust the phone to a proper position and you can start using.



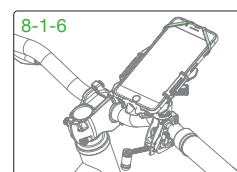
8-1-2: Put **15** V belt **A** into the groove on **14** quick release clip **B**. Pull the **C** ears of V belt to both phone top sides for bundling.



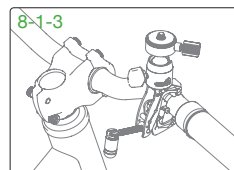
8-1-5: Charging hole **13** is for your power cable or earphone line.



8-1-6: The installation is complete



8-1-3: Clamp **R2 Ranger** Clampod to a proper location and shake gently to make sure it is firmly secured to prevent items from loosening and falling.



9 Safety warning

- 9-1: Please follow the operation notes. The company takes no responsibility for any man-made damage.
- 9-2: Please do not take your hands away from the clampod before it is firmly established, or your electronic product might be damaged from falling.
- 9-3: The product has a strong clamping force. Please do not screw too tight, so that it will not damage the clamped object.
- 9-4: Do not apply any volatile solvents (kerosene, paint thinner) on the product surface.
- 9-5: If the product is damaged or deformed from falling or impact, please stop using the product anymore, so that your electronic product will be damaged from falling.
- 9-6: An adult must accompany when children under the age of 12 are using the product.
- 9-7: For your safety, please do not use any electronic device while driving a vehicle.

10 Specifications of the product

Model number: R2

Size: 10 x 7 x 3.2cm

Weight: 135g

Materials: Aerospace-grade Aluminum Alloy, Nylon.

Screw of the quick release clip: 1/4"

Clamping range: Ø10~Ø32mm, flat surface 5~ 32 mm

Clamp load capacity (for dynamic): 300g

Clamp load capacity (for static): 3kg

Model number: T-PH03

Size: 11 x 7 x 4.8 cm

Weight: 80g

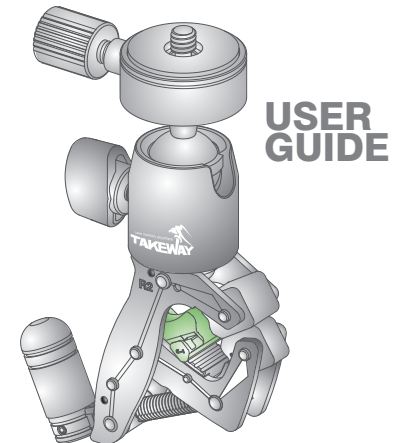
Materials: Plastic, Aluminum Alloy, Silicone(V belt)

Available size: Maximum size 15.8 x9x1.3cm

(Available for smartphone with size from 4" to 6")

Clamp load capacity (for dynamic): 300g

Made in Taiwan



Before using the product for the first time, please read through the user guide.

Please use this product correctly after fully understanding the content of the user guide.

All information described in this user guide is based on the test standard of Takeway . Sorry for the inconvenience caused if there are any errors. The design and specifications of this product are subject to change without notice.

Copyright: All Rights Reserved

EHOMA INDUSTRIAL CORPORATION

TEL: +886-4-2406 5031

info@takeway.tw

www.takeway.tw